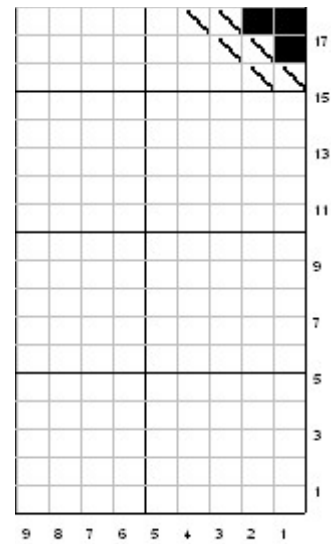
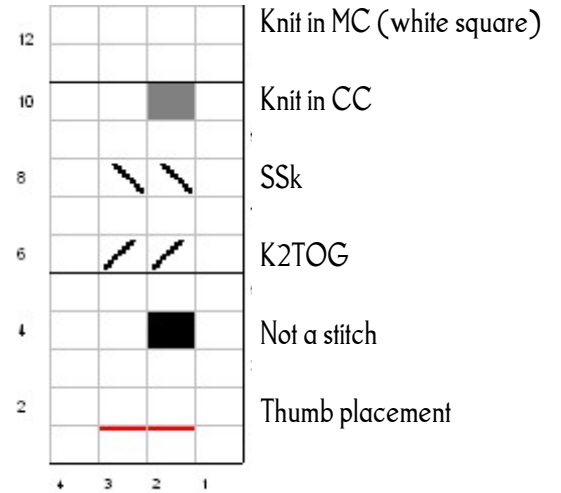
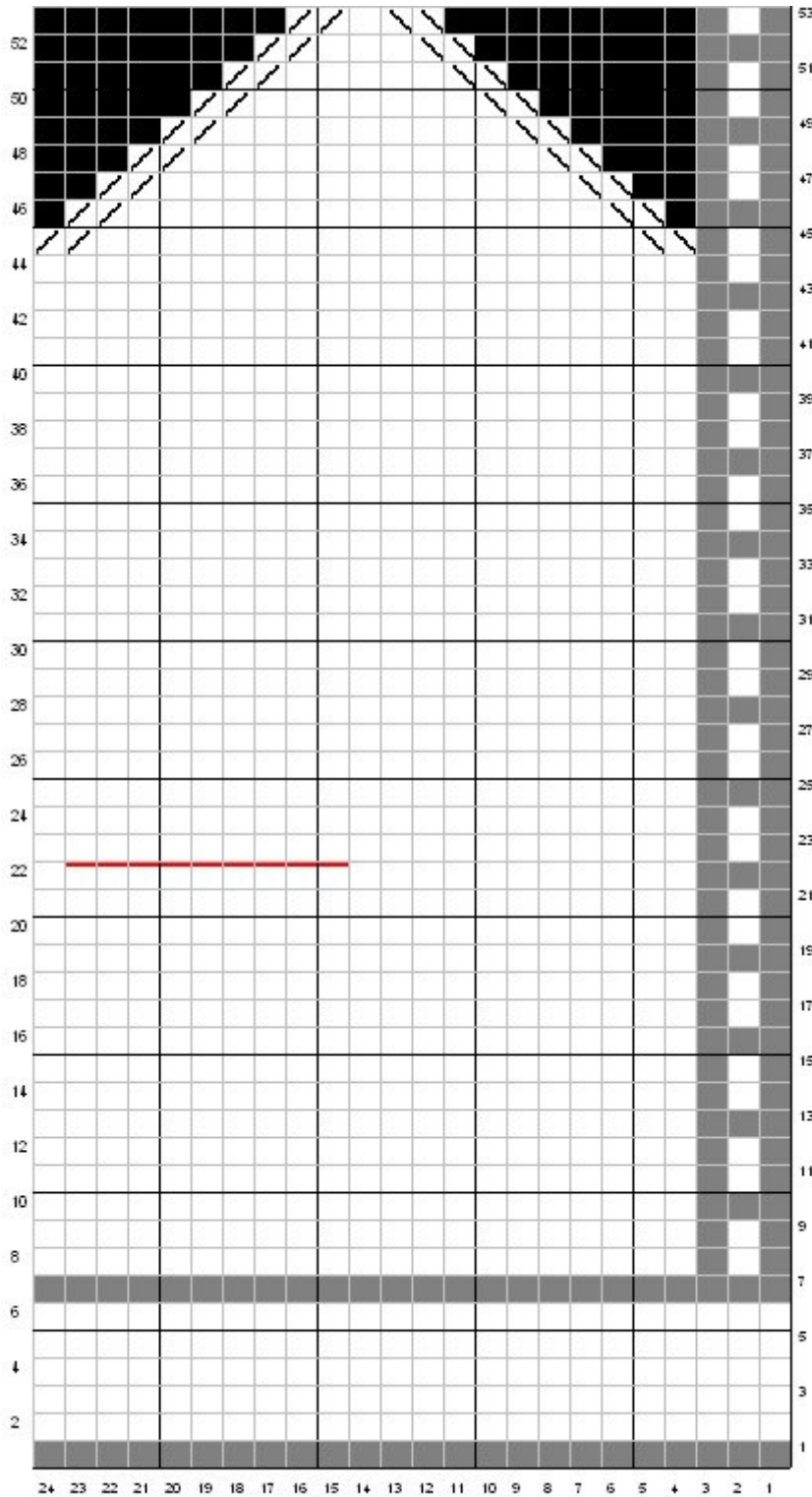


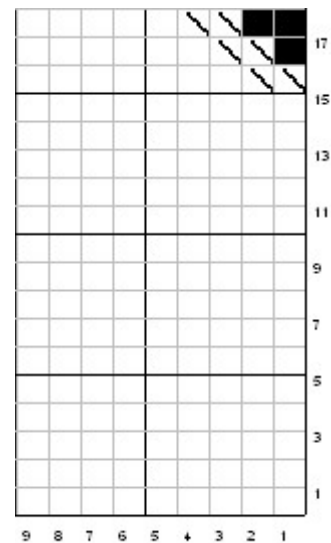
Generic Norwegian Mitten Chart

*gauge - 6 sts. per inch in sport weight wool makes a mitten 8" in circumference and 12" high

*Cast on 48 sts, do 2" ribbing, then knit charts (make front and back different for fun!). Knit in scrap wool at red line, then go back, remove, and knit thumbs. Flip thumb placement for second mitten.



thumb side 1



thumb side 2