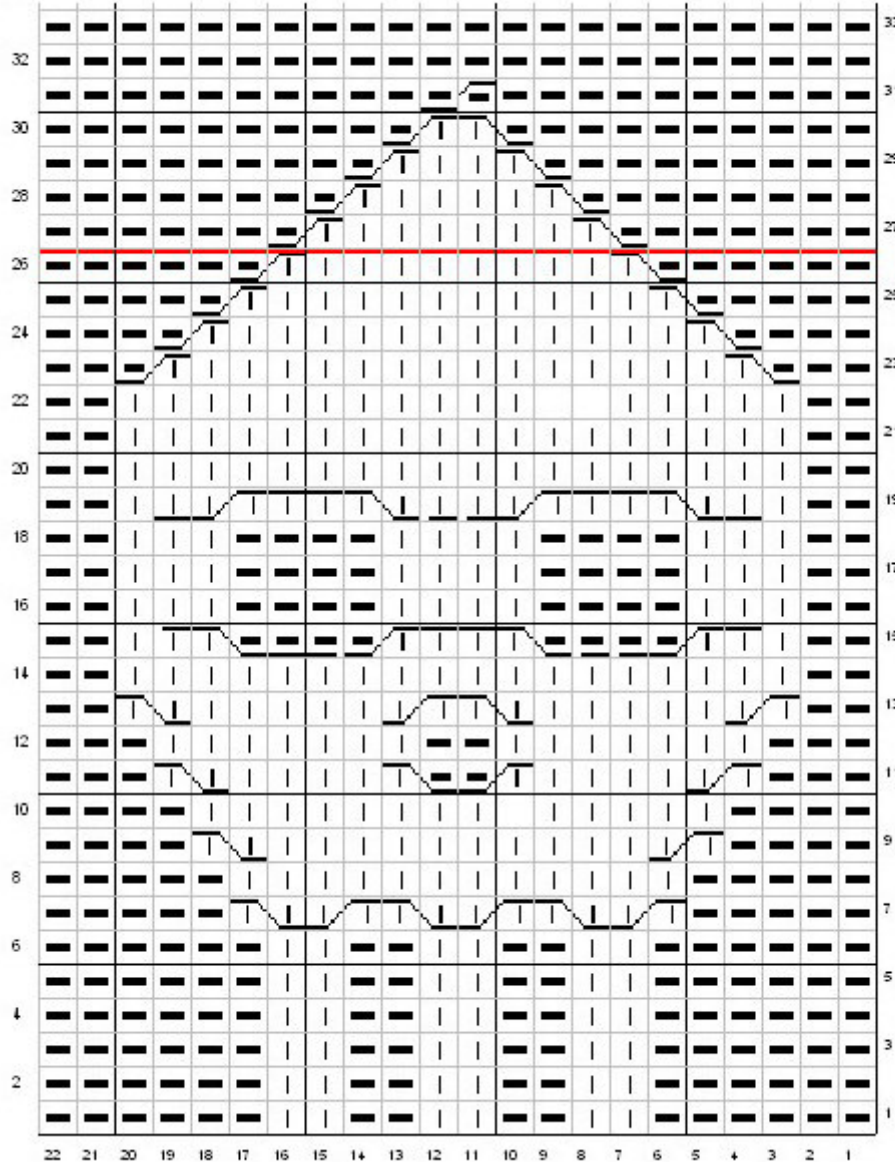


Row 1 is a right side row. This chart requires cabling on the wrong side as well as right side, starting on row 24. Follow the instructions for each cable in the key and you'll be fine.

end of repeat



	K on RS, P on WS
	P on RS, K on WS
	Cable 2 right, K and K
	Cable 2 left, K and K
	Cable 2 right, K and P
	Cable 2 left, P and K
	Cable 4 left, P, P, K, K
	Cable 4 right, K, K, P, P
	Cable 4 left, K, K, K, K
	Cable 4 right, K, K, K, K
	Cable 2 right, purl both

All content and photos are © Hello Yarn. All rights reserved. These patterns are for personal and non-profit use only. This means you can knit for yourself, for a gift, for charity, or for a charity auction/sale. You can print out the patterns for friends, if you wish, as long as you print straight from my site so the copyright information is intact. You may not sell items made from these patterns for profit or give these patterns away in your store to sell yarn.

Visit www.helloyarn.com for more patterns.